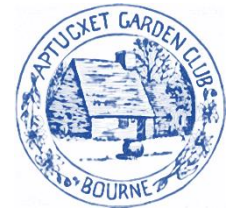


# Aptucxet Garden Club of Bourne



## Stewards of the Earth

Monthly Newsletter

November 2021



*Adopt the pace of nature,  
her secret is patience.*

- *Ralph Waldo Emerson*

### October Meeting

On a gorgeous fall day, forty club members and a few guests, gathered at the Aptucxet Trading Post for a fun, information packed meeting. Here is a brief photo summary of the program. And special thanks to the Hospitality Committee for a lovely lunch!



Judy Sheehy & Alda Barron  
*Ikebana Designs*



Katherine Tracey  
Avant Gardens, Dartmouth  
*Wonderful Succulents*



Sally Baer  
*Tips for the preparing a fern for the  
Horticulture Show*



Marcia Willmott  
*Perfect day for a bike*

**Art In Bloom – October 8-11  
Plymouth Center for the Arts**

This year's Art in Bloom at the Plymouth Center for the Arts was a delight! Four of our club members did very creative floral interpretations. Here are their presentations with the art that inspired them.



*By Alda Barron*



*Yellow Nude*



*By Isabel Mello*



*Pond Fish*



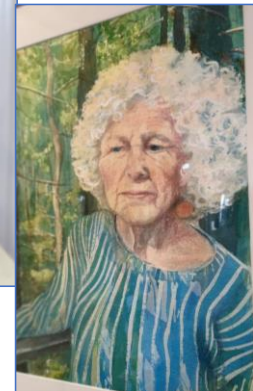
*By Paula O'Neill*



*Window Shopping*



*By Judy Sheehy*



*The Forest in the Mind*

## Getting Ready for the Holidays – The Bow Making Workshop

**Ho, Ho, Ho! Here come the holidays!**

Treated to cheese muffins and carrot bread, eight club members gathered at Jan Roger's home to make bows. Within a few hours the team produced eighty bows for our holiday wreaths and 60 ribbon picks. Amazing! Jan was delighted! It was fun fall morning of work!



**Aptuxet Trading Post, founded 1627**

## Garden Fall Clean Up

The Aptuxet Trading Post is an important part our local history. Caring for the gardens is one of the many civic projects that our club embraces. This is our *stewardship of the earth in action*.

Club members gathered to help Co-Chairs Jan Casiello and Dorothy Haney clean up the gardens.



## Looking Ahead - AGC November Events

|   |  |
|---|--|
| <p><b>Nov 8</b><br/>Bourne United Methodist Church <b>or remote, watch for email to confirm location.</b></p>  <p>Suzanne Mahler</p> | <p><b>Board Meeting:</b> 11:15 am<br/><b>Day Meeting:</b> Tea: 12:00 pm, Meeting 12:45</p> <p><b>Artistic Design: Design Tips</b><br/><b>Horticulture: Stepping Stones</b></p> <p><b>Program: How to Attract Pollinators, by Suzanne Mahler</b><br/>Ms. Mahler is an avid gardener, photographer and lecturer. She will discuss how to attract pollinators to your garden and the growing threats to our wildlife visitors. Suzanne is a plant collector, with over 300 daylily cultivars and 250 varieties of hostas in her yard.</p> <p>Hospitality Chair: Betsy Ferris ... Committee: Jan Browne, Sally Curtin, Carol Doherty, Cyndy Hurley<br/>Social Theme: Kindness &amp; Thanks</p> |
| <p><b>Nov 17</b></p>  | <p><b>Garden Therapy</b><br/>Cape Cod Nursing Home</p>   |
| <p><b>Nov 30</b><br/>Bourne United Methodist Church</p>   | <p><b>Wreath Workshop</b> 10:00 am – 3:00 pm<br/>This is our big annual fun making event. All members are encouraged to come and help make our Holiday wreaths!</p>  |
| <p><b>Date &amp; Time TBD</b><br/>Email will follow</p>   | <p><b>Boxwood Workshop</b><br/>Pickup at Carolee Packard's home (See Yearbook for address)</p>   |

### The Flower Show Corner – NGC (National Garden Clubs) Horticulture Specialty Flower Show By Sally Baer



The preliminary schedule for the **WINTER'S DELIGHT Specialty Flower Show** was reviewed with the members at the October meeting. The show will have two divisions: Horticulture and Education. Horticulture will have three sections:

- A. Warm and Cozy (Indoor Container Grown Plants),
- B. Soft and Shiny (Broadleaf Evergreen Cut Branches), and
- C. Prickly and Pointed (Needled Evergreen Cut Branches).

A demonstration on how to prepare a Fern for Section A was presented. Members were shown how to clean up the plant. Containers are limited to 10" in diameter. The container plants must be in the possession of the member by November 1, to demonstrate that it has been raised by the member for at least 90 days. In addition, Volunteers will be needed for several the Flower Show tasks. Sign-up sheets will be circulated.

Tips for each type of submittal will be reviewed at future meetings. A handout with tips for an Educational Exhibit was also provided. All members are urged to participate in **WINTER'S DELIGHT**.



### Caring & Sharing 2021

**Please donate and then please shop!** Donations benefit local charities. Auction items range from tabletop trees to gift baskets, and many creative handmade gifts. To receive the donation form email [pat.nemeth@hotmail.com](mailto:pat.nemeth@hotmail.com)

Donations will be received from November 8 to 23. The auction will be held from November 29 to December 8. To shop the auction, go to <https://www.32auctions.com/CaringSharing2021>

Drop off and pickup of the items will be on Saturday December 11 at the Library.  
*By the Friends of the Jonathan Bourne Public Library.*

### “Deck the Halls” Tickets



#### Support our Scholarship Program

There is still time to purchase tickets for our scholarship program! Tickets will be available at our November 8<sup>th</sup> meeting.

Each \$10 ticket gives you 3 chances to win a collection of custom-made fresh evergreen decorations. Winners will receive: a wreath or green swag, a lighted tabletop boxwood tree, a custom-made centerpiece, and a holiday mug filled with greens and adornments.

Drawing will be held Nov 15. Two winners will be chosen and then notified by phone, text, or email.



### The Hyannis Garden Club Invites You to its 5<sup>th</sup> Holiday Showcase & Boutique

#### *Cape Cod Through the Centuries*

November 18-20, 9:00 am to 5:00 pm  
Cultural Center of Cape Cod  
307 Old Main Street, South Yarmouth

Celebrate 400 years of holidays. The Cultural Center of Cape Cod will be transformed. The building will be dressed for the holidays with lush greens, berries and ribbons. Inside you will tour room displays that will take you from the landing of the Mayflower, through seven more iconic Cape Cod historic towns. Each area will be decorated with fresh floral arrangements, artwork, and furnishings.



In addition to this beautiful “tour”, there will be a grand boutique with beautiful floral arrangements, holiday decorations and lovely hand-made items. You will find perfect gifts and/or treasures for your home.

This event is only offered every 3 years. Tickets are \$20. To purchase online go to [www.thegardenclubofhyannis.org](http://www.thegardenclubofhyannis.org)

## Beauty in the Fall Garden

As we spin closer to winter, and our gardens get ready to sleep, the occasional last burst of color is a special delight. Here is a little bit of the beauty that was still in the Briggs-McDermott gardens at the end of October.



## VOTE for Bourne to be a Green Community

A Special Town Meeting is scheduled for November 15, at 7:00 pm in the Bourne Middle School gym. On the agenda is a proposal to adopt the State's "Stretch Energy" Code. This amendment to the building code has already been approved by the Select Board and the School Committee. This is the last step needed for Bourne to be a designated a Green Community.



The MA **Green Communities Designation** program provides grant funds for clean energy projects for municipal and school facilities.

Please come and vote! Your "Yes" vote will allow the Town to apply for \$172,000 in grant funds for green projects. Future grants are also possible. *From Cheryl Keown, AGC member & member of the Town Energy Advisory Committee*



*Thank You!*

A SPECIAL THANK YOU goes to **Jan Casiello** for helping with the pruning of the shrubs at the Aptucxet wildflower gardens. Her work and expertise are appreciated.

*From Laurie York & Alda Barron*

## New England Garden Club Federation 4<sup>th</sup> Annual Meeting

In mid-October, past President Laura Bergeron attended the 4<sup>th</sup> Annual Meeting of New England Garden Clubs Federation, in Wells, Maine. The three-day event featured interesting programs, a flower show, and an auction of scarecrows.

Laura enjoyed the trip and brought back news of a special report on *Conserving Plant Diversity in New England.*



The report is the result of a two-year study done by The Nature Conservancy and The Native Plant Trust. This 250-page report is an assessment of conservation progress to date in the six-state region. It includes an interactive mapping tool that is very impressive. And, most importantly, it presents a blueprint for future action in each state.

Next month's issue of the AGC Newsletter will feature a review of the report. Thank you, Laura, for sharing this information.

## Native Plant Swaps for Containers

*Tips from North Creek Nurseries*

North Creek Nurseries is a wholesale propagation nursery in Pennsylvania. Their motto is “where horticulture meets ecology” and their website offers a wealth of information. The fall edition of their blog the “Plug” presented the wonderful idea of swapping out non-native container plants with colorful native alternatives. Here are just a few of their suggestions.



To read the full article go to <https://mailchi.mp/northcreeknurseries/native-plant-swaps-fall-edition>

## Xerces Webinar

November 11 – 1:00-2:00 PM

### Western Butterflies: History, Threats and Possible Futures



*Professor Forister*

Join Matt Forister, Professor of Biology and Insect Ecology at the University of Nevada, as he explores data from different long-term sources on western butterfly species and habitats and an overview of threats in the west.

To register for this free webinar, go to <https://xerces.org/events/webinars>

This program is part of Xerces overall mission to address the loss of biodiversity and climate change through nature-based solutions.

## A Fall Reminder from Xerces

Leaves are not litter. They are food and shelter for bees, butterflies, beetles and more. Xerces has produced this delightful yard sign. Donate \$57 and receive this 9"x 10.5" outdoor sign, plus a year's membership.



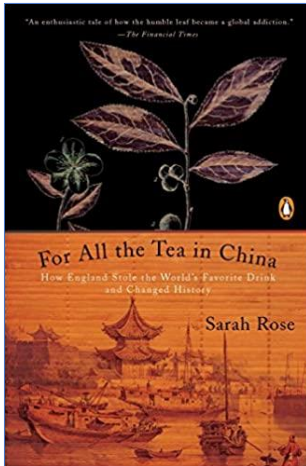
See the Xerces Gift Shop to purchase the sign and for other gift ideas. <https://gifts.xerces.org/collections/all-products>



## Book Review Corner

***For All the Tea in China: How England Stole the World's Favorite Drink and Changed History***

By: Sarah Rose



Published 2011



Connie Spilhaus

### ***Book Review by Connie Spilhaus***

My husband Karl recommended this book to me, since he knows I like historical fiction. Only this riveting book isn't fiction! As I read ***For All the Tea in China***, I had three thoughts. First, what a great movie this would make! Second, my garden club friends would really enjoy this book. And third, what a great "crime novel" for my book club!

The story is set in the late 1800's, a fascinating time period. England's empire is at its height, and the patent colonial plundering still shocks me to read about. The author's research is impressive; she juggles details of botany and cultural history relating to two vastly different countries and makes both topics equally interesting to read about.

Brits are a nation of tea-drinkers, but it wasn't always so. Britain's East India Company depended on ample, cheap supply of commodities and strong, wide-spread demand. The shipping company was hugely successful in establishing a market for tea, at home and in all the other parts of the British Empire. Greater control of the supply would mean vastly more wealth. This book recounts the unbelievable lengths to which this goal was achieved.

Combining horticulture and espionage, the book is a dramatic story of how in 1848 the secret of tea was stolen from China. Scottish gardener, botanist, and plant hunter Robert Fortune's story fascinated me. Hired by East India Company, he sneaks into a region forbidden to foreigners to steal closely guarded secrets of tea horticulture and manufacturing. He barely escapes with his life. Described as one of the most daring acts of corporate espionage in history, Fortune's pursuit of China's ancient secret makes for a classic nineteenth-century adventure tale, one in which the fate of empires hinges on the feats of one extraordinary man.

This book is available from the Jonathan Bourne Public Library. I give the book 5 stars! I hope you will enjoy it.



## Interesting Plant Facts: Clivia



Clivia are found in South Africa and Swaziland. Also known as kafir-lily, the clivia is a beautiful houseplant you can grow relatively easily. They are typically forest undergrowth plants, adapted to low light. Flowers have three sepals and three petals. The flower varies in shape from an open cup to a narrow hanging tube, and are mainly in shades of yellow, orange and red.

The long strap-shaped leaves are evergreen and spring from thick branching roots or rhizomes. Clivia fruits are berries.

In spring, place the potted plant outdoors in dappled shade. They love warmth, water, and food during their active growth period. Come fall it is time for the plant to rest. Move the plant back indoors into a dark cool room. Reduce water to once a week. In mid-January bring the clivia out of the dark and into the light. It is time for them to bloom. Plants will bloom in March or April.

Clivia plants require rich potting soil with a bit peat added to the mix. Make sure to never repot your clivia until the fleshy roots have entirely outgrown the pot. Many plants will grow for more than 15 years. Enjoy!



## Message from the President

*Hi Ladies,*

*Fall is falling fast and soon winter will be upon us. We will be forced inside like my predecessors the 'bears', and our gardens will start to hibernate. Note the reminder to 'leave the leaves' in an earlier passage. I am strictly adhering to this and enjoying the weather, biking, and walking.*

*I hope you all are as excited about the Flower Show as I am. As a Federation Club we are required to have a show every 5 years or so. I hope you will jump in, participate, and have fun!*

*Jan Rogers has organized a great scholarship fund raiser. Please help the effort and buy and sell those tickets. You can sell the tickets to neighbors, friends or give as a gift to family and friends. But buying at least one ticket is your duty. Go for it and many thanks in advance!*

*On a final note, we will be going inside starting in November, unless it is especially warm as it was last year. This means masking up and limiting our meetings to 40 people. No guests will be allowed; It will be first come first served. But since we generally only average 30 to 35 people, there should be plenty of room. So don't shy away.*

*Happy gardening,  
- Sally Baer*

**The Aptucket Garden Club of Bourne is a member of the Southeastern District of the Garden Club Federation of Massachusetts, the New England Garden Clubs and the National Garden Clubs, Inc.**

Newsletter Editor: Pat Nemeth [pat.nemeth@hotmail.com](mailto:pat.nemeth@hotmail.com)  
Visit the Aptucket Garden Club Website [www.aptucketgardenclub.com](http://www.aptucketgardenclub.com)